

South Korea – Alberta Relations

Government
of Alberta ■



This map is a generalized illustration only and is not intended to be used for reference purposes. The representation of political boundaries does not necessarily reflect the position of the Government of Alberta on international issues of recognition, sovereignty or jurisdiction.

PROFILE

Capital: Seoul

Population: 48.2 million (2010; National Statistical Office)

Language: Korean

Government: Presidential Republic

Head of State: President Lee Myung-bak (since February 2008)

Head of Government: Prime Minister Kim Hwang-sik (since October 2010)

Currency: \$1 CDN = 1,119.84 South Korean Won (2011 average)

GDP: US \$1,014.5 billion (2011)

GDP (PPP): US \$1,479 billion (2011)

GDP Per Capita (PPP): US \$29,865 (2011)

GDP growth rate: 3.8% (2006-2010 average)

Unemployment: 3.8% (2010-2011)

Inflation: 3.0% (2006-2010 average)

Key Industry Sectors: Electronics, automobile production, steel, shipbuilding, chemicals, telecommunications.

DID YOU KNOW?

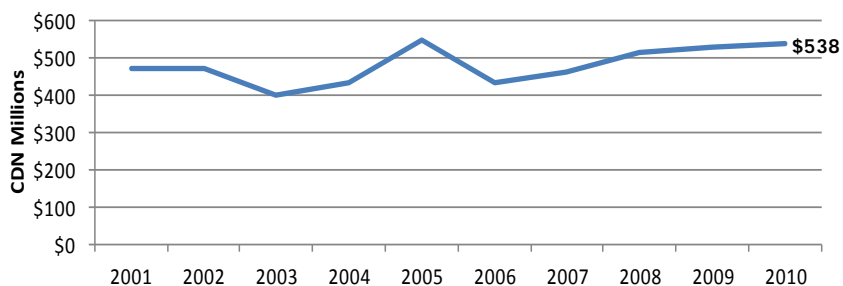
- Alberta has long enjoyed positive relations with the Republic of Korea (commonly known as South Korea).
- Pyeongchang County, South Korea will host the 2018 Winter Olympics. Located southeast of Seoul, in the southern part of Gangwon Province, Pyeongchang sits at 700 meters above sea level in the mountainous Taebaek region.
- South Korea announced a long-term national "Green Growth" energy strategy, which aims to increase energy efficiency and the supply of clean energy and reduce energy consumption through to 2030.
- Forty-three per cent of South Koreans share just three family names—Kim, Lee (Yi or Ri) and Park (or Pak). The most common, Kim (21 percent), means "gold."
- South Korea has four seasons, with a wet monsoon/summer season in the middle of the year, and a cold winter from November to March. Like Alberta, South Korea's winter weather is usually cold and dry, with heavy snow in the north and east.

- South Korea's demographic profile is distinctive. With more than 470 people per sq km, it is the third-most densely populated country in the world (excluding city-states), after Bangladesh and Taiwan.
- The South Korean flag is called Taegeukgi. Its design symbolizes the principles of the yin and yang in Asian philosophy. The circle is surrounded by four trigrams, one in each corner. Each trigram symbolizes one of the four universal elements: heaven, earth, fire and water.

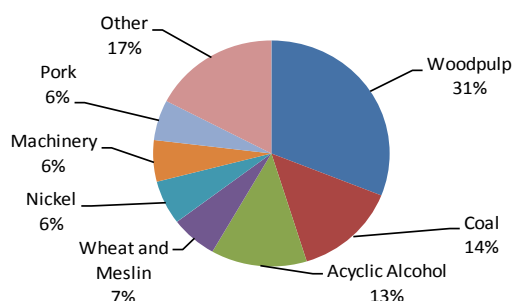
RELATIONSHIP OVERVIEW

- Gangwon province in South Korea, which twinned with Alberta in 1974, is Alberta's oldest sister province relationship. Over the years, many twinning activities have involved education, culture and sport exchanges.
- Edmonton has a friendship agreement with the municipality of Wonju, South Korea. Daejeon is Calgary's sister city in South Korea.
- Alberta has maintained a trade office in Seoul since 1988. It is co-located in the Canadian Embassy.

Alberta's Exports to South Korea 2001-2010



Alberta's Merchandise Exports to South Korea 2006-2010
(Total Average CDN\$481 Million)



TRADE AND INVESTMENT

- South Korea is Alberta's 5th largest export market and an important source of trade and investment.
- South Korea remains a priority market for Alberta tourism. Travel Alberta maintains an in-market representative in Seoul.
- From 2006-2010, Alberta's direct imports from South Korea averaged \$180 million and consisted primarily of machinery and industrial equipment, but also iron and steel, tires and rubber, and plastic products. This figure does not include goods sold in Alberta that arrived via distribution hubs in other provinces.
- Canada and South Korea continue to discuss a free trade agreement.

ENERGY

- In November 2010, Alberta signed an energy cooperation agreement with South Korea's Ministry of Knowledge Economy.
- In November 2010, Korea Investment Corporation (KIC) invested \$100 million in Calgary-based Osum Oil Sands in a private placement sale.
- In October 2010, the Korea-Canada Energy Forum, held in Calgary, provided an opportunity for promoting investment, trade and research and development collaboration between South Korea and Alberta in the energy sector. The event also enhanced mutual understanding of the energy industry and regulatory framework in South Korea and Alberta.
- In August 2010, South Korea's STX Energy announced that it acquired the Maxhamish field in northwestern Canada from Encana Corp for 174 billion won (\$145.6 million). Encana will continue to provide technical support.

- In July 2010, KIC invested \$50 million in Calgary-based thermal oil sands developer Laricina Energy in a private placement sale.
- In February 2010, Encana and Kogas Canada Ltd., a subsidiary of Korea Gas Corporation (KOGAS), entered into a three-year exploration and production agreement. KOGAS plans to invest approximately \$565 million over the next three years in order to earn a 50 percent interest in about 154,000 net acres in the Horn River Shale and the Montney formation.
- Korea National Oil Corporation (KNOC) acquired Calgary-based Harvest Energy Trust in a combined \$4.1 billion cash and debt deal in October 2009. The joint venture was later reorganized as Harvest Operations Corp., which owns both assets from Harvest Energy Trust and the BlackGold project KNOC acquired in 2006. In December 2010, the company acquired Hunt Oil.
- KNOC established the KNOC Global technology and Research Centre in Calgary in November 2010.
- In 2009, Imperial Oil awarded a US\$250 million contract to Sungjin to supply the first 200 modules for its Kearl oil sands mining project.
- South Korea imported 3.1 million barrels per day of oil in 2009, and was the 5th largest importer of oil in the world that year. The country depends highly on Middle Eastern countries for its oil supply.
- According to the Energy Information Administration, South Korea is shifting its energy demands away from oil, and more toward nuclear energy and natural gas consumption. In response, energy producers have started investing in alternative energy projects.

- South Korea relies on imported liquefied natural gas (LNG) for most of its natural gas. Natural gas imports have nearly doubled in the past decade. As of 2009, South Korea was the second largest LNG importer in the world, after Japan. In 2009, the country consumed 1,204 billion cubic feet of natural gas.
- In 2008, South Korea's thermal generation comprised of 37 percent from coal, 29 percent from natural gas and less than 3 percent from oil.
- In 2008, South Korea's installed electrical capacity was 79.9 billion kilowatt-hour (kWh). The country's net generation was 418.1 billion kWh, as it consumed 402.1 billion kWh that year.

AGRICULTURE

- In 2010, Alberta's agri-food exports to Korea totaled \$146.2 million (representing an increase of 24 percent from 2009) and consisted mainly of wheat (\$71.1 million), pork (\$28.7 million), crude and refined canola/mustard oil (\$15.8 million avg.), wheat or meslin flour (\$11.4 million), raw hides and skins (\$10.7 million), cereal preparations (\$1.7 million), processed potatoes (\$1.7 million), and malt (\$1.4 million).
- In 2010, Alberta accounted for 26 percent of Canada's agriculture and agri-food exports to South Korea, the highest among Canadian provinces and territories.
- In June 2011, the South Korean and Canadian governments reached an agreement allowing Canadian beef access to the South Korean market for beef derived from animals under thirty months of age. South Korea currently is undertaking a domestic process (public consultations and legislative process) for allowing market access for Canadian beef.

EDUCATION AND CULTURE

- There are a variety of linkages and agreements between post-secondary institutions in Alberta and South Korea in the areas of pharmaceutical science, medicine, mathematics, education, agriculture, physics, and Korean and Canadian studies.
- As a Centennial gift to Alberta (2005) and to mark the 30th anniversary of the Alberta-Gangwon sister province relationship (2004), Gangwon undertook construction of a Korean-style pavilion on the grounds of the Royal Alberta Museum.
- Between 2006 and 2010, South Korea was the largest source country for international students to Alberta, with 4,439 foreign issued a permit to study in Alberta.
- Many South Korea students attend schools in Alberta for English as a Second Language programs.
- The majority of international students who choose to study in Alberta at the K-12 level come from South Korea, and many school districts actively seek to attract students from South Korea to the province.
- For over 10 years, the Calgary Board of Education has built a dynamic relationship with the Seoul Metropolitan Board of Education, which is a local education authority of the Korean Ministry of Education. Each year about 15-50 teachers from South Korea take part in a specialized program on English language teaching offered by the district in Calgary. The Board has also offered leadership training to administrators from Seoul, and has sent its own teachers to participate in summer language camps in South Korea.
- Since 1984, the University of Alberta's Kangwon Teachers of Education Program (KTEP), has helped over 400 Gangwon Province teachers hone their English language teaching skills.

COMMUNITY

- The Edmonton Korean Community Centre Foundation received a \$1 million Government of Alberta Community Facility Enhancement Program (CFEP) grant to help in the development of the South Edmonton Multicultural Centre, which will serve as a venue for Korean and numerous immigrant groups to host cultural events and activities.
- According to 2006 census data, there are approximately 12,340 Albertans of Korean descent.
- Active Korean community associations have been established in Calgary and Edmonton. In addition to providing assistance to newly arrived immigrants, these associations help to promote Korean culture.
- CKER-FM broadcasts across Alberta in many different languages, including Korean.

EMERGING OPPORTUNITIES

- Between 2006 and 2010, a projected 2,554 immigrants from South Korea chose Alberta as their destination, 81 percent of whom were economic immigrants. During the same period, a projected 3,390 foreign workers from South Korea were issued a permit to work in Alberta.
- Albertan and South Korean businesses are working together to promote export opportunities in the value-added building products industry.
- Alberta information and communications technology (ICT) companies are working with South Korean partners to establish a market presence, especially in the wireless sector.
- In July 2010, Korean Air launched its new seasonal non-stop service between Calgary and Seoul.
- In July 2009, the federal government of Canada announced the successful conclusion of a Blue Sky air transport agreement with South Korea. The agreement allows any number of air carriers from either country to operate scheduled passenger and all-cargo air services as frequently as desired, to and from any point in either country's territory.

RECENT VISITS

- November 2010: Alberta's Minister of Intergovernmental, International and Aboriginal Relations met with government and industry leaders in South Korea to advance Alberta's economic and intergovernmental interests.
- September 2009: The Lieutenant Governor for Political Affairs of Gangwon Province visited Alberta.
- June 2008: Alberta's Minister of Intergovernmental, International and Aboriginal Relations met with key government and industry contacts in South Korea to advance Alberta's trade and investment priorities.
- May 2008: A delegation from the National Gaming Control Commission of the Republic of Korea visited Edmonton and met with the Alberta Alcohol and Drug Abuse Commission.

DIPLOMATIC REPRESENTATION

- His Excellency NAM Joo-Hong is the Ambassador of the Republic of Korea to Canada based in Ottawa.
- Mr. CHOI Yeon-Ho is the Consul General of the Republic of Korea based in Vancouver, which has jurisdiction for Alberta.
- Mr. David Chatterson is the Ambassador to the Embassy of Canada to Korea in Seoul.
- Mr. John R. Perraton is the Honorary Consul General of the Republic of Korea in Calgary.

