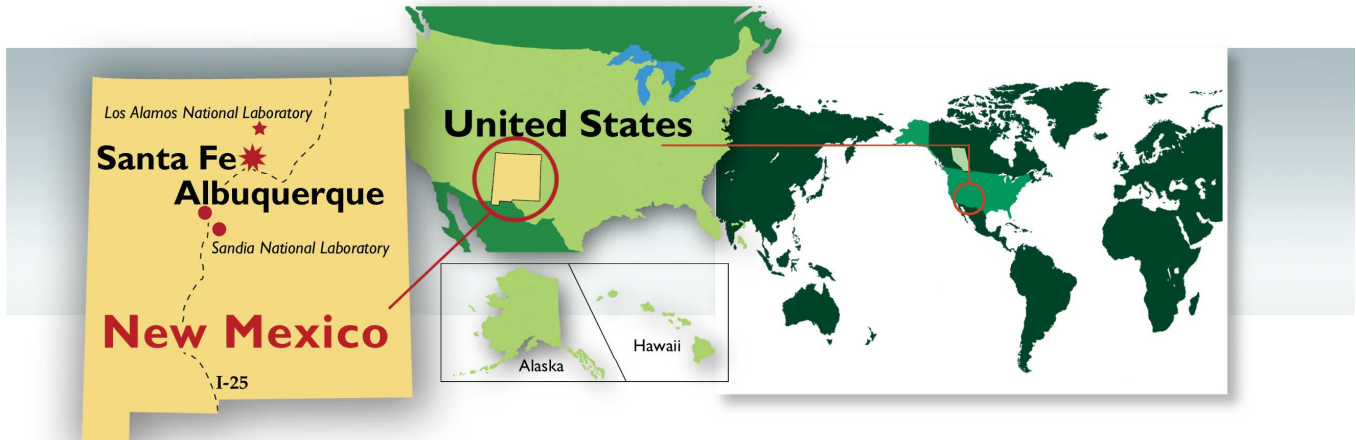


New Mexico – Alberta Relations

Government of Alberta ■
International and Intergovernmental Relations



PROFILE

Capital: Santa Fe

Population: 2,059,179 (2010)

Language: English (Spanish)

Government: Bicameral state government

Head of Government: Governor Susana Martinez (R). 1st term. First female Governor of the state.

Term Limits: Two consecutive terms

Term Expires: January 2015

Currency:

\$1CDN = #1.0331 U.S. (May 2011)

Gross State Product (GSP): \$75.5 billion U.S. (2010)

Per Capita Income \$33,837 U.S. (2010)

Unemployment: 8.1% (March 2011)

Key Industry Sectors: petroleum and gas, food processing, shipbuilding, pulp and paper products, metals, chemicals, timber, mining, textiles, fishing

Main Cities (Metropolitans): (2010)

- Albuquerque: 545,852
- Los Cruces: 97,618
- Rio Rancho: 87,521
- Santa Fe: 67,947

RELATIONSHIP OVERVIEW

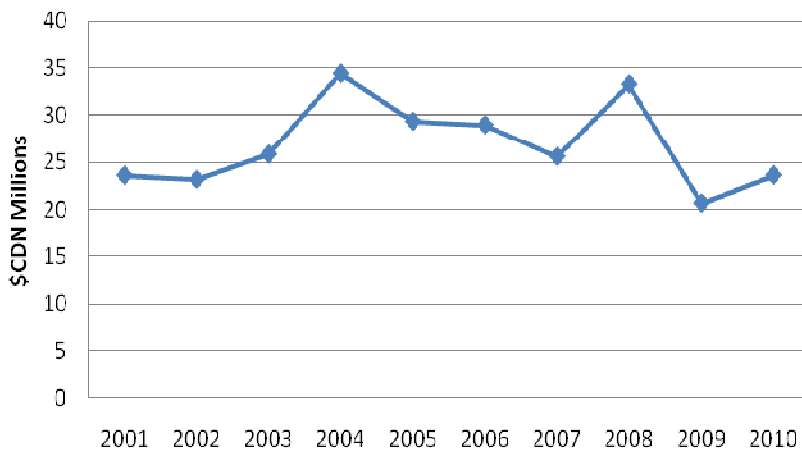
- New Mexico is connected to Alberta via the I-25 highway, or Camino Real, which links to Alberta through connecting roads in Montana, and which Alberta regards as complimentary to the CANAMEX Trade Corridor.
- As 2004 Chair of the Western Governors' Association, New Mexico's Governor, Bill Richardson hosted the North American Energy Summit in Albuquerque, which featured a strong Alberta presence, including a keynote by Premier Klein.

DID YOU KNOW?

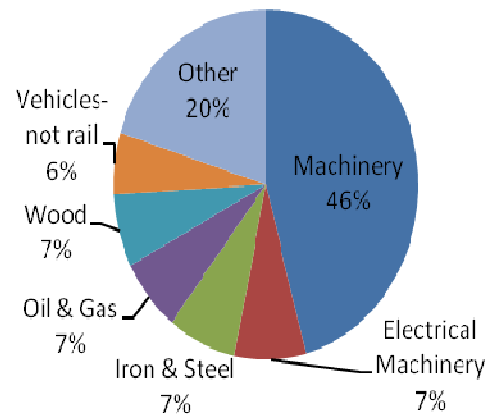
- Completed in 1581, El Camino Real (The Royal Highway) stretched from Santa Fe to Mexico City. This was the first road established by Europeans in what is now the United States.
- The world's first Atomic Bomb was detonated on July 16, 1945 on the White Sands Testing Range near Alamogordo. North of the impact point a small placard marks the area: Trinity Site.

- New Mexico is home to two of the United States' national labs: Los Alamos and Sandia. Los Alamos is the largest employer in New Mexico, with more than 10,000 personnel with a focus on national security research. Sandia's programs include energy infrastructure security, bioscience, and nanotechnology.
- Intel Corporation's world-class microchip manufacturing centre outside Albuquerque is the largest private industrial employer in New Mexico.
- New Mexico has the lowest water-to-land ratio of all 50 states, with lakes and rivers making up only 0.002% of the state's total surface area.

**Alberta's Domestic Exports to New Mexico
(2001-2010)**



Alberta's Domestic Exports to New Mexico (2006-2010 average)



TRADE AND INVESTMENT

- From 2006-2010, Alberta's exports to New Mexico averaged \$26.4 million CDN.
- Alberta domestic exports to New Mexico were worth \$23.6 million CDN in 2010.
- Top exports to New Mexico include oil and gas equipment, wood products, vehicles (not including rail) and electrical equipment.

EMERGING OPPORTUNITIES

- New Mexico has a well-established high technology research and development sector, anchored by its two National Labs and Intel's microchip plant.
- New Mexico is a U.S. leader in energy production. Alberta-New Mexico collaboration may be beneficial to both.

ENERGY

- New Mexico is a leading producer of natural gas in the U.S., accounting for nearly one tenth of total production, exporting it to other regions of the country.
- New Mexico is among the state leaders (along with Wyoming) in coal bed methane production – an emerging resource industry in Alberta with significant potential.

- New Mexico is also the fourth-leading state in proven oil reserves, and a net exporter of electricity.
- U.S. Senator Jeff Bingaman (D-NM) is the Chairman of the Senate Energy and Natural Resources Committee.
- Former Governor Bill Richardson was U.S. Energy Secretary in the Clinton Administration, and remains very active in energy issues sitting on a number of boards. He was appointed as a special envoy for the Organization of American States.

SHARED ORGANIZATIONS

- Council of State Governments West (CSG-West)
- Ports-to-Plains Alliance (PTP)

RECENT VISITS

- December 2010: Energy Minister Ron Liepert and MLA Fred Lindsay traveled to Santa Fe to discuss Alberta's commitment to responsible energy development with government and industry representatives at the U.S. Energy Council's 2010 Global Energy and Environmental Issues Conference.
- October 2009. MLA Ty Lund attended the CSG-WEST Annual Meeting in Santa Fe.
- July 2007: Minister Snelgrove traveled to Santa Fe to attend the Western Association of State Departments of Agriculture (WASDA) meeting.

- March 2006: MLA Lloyd Snelgrove and MLA Doug Griffiths traveled to Santa Fe for rural development discussions and the Tri-National Accord meeting.
- December 2005: Alberta MLA Mel Knight attended the Energy Council Meeting in Santa Fe.
- April 2004: Premier Klein traveled to Albuquerque to participate in the North American Energy Summit, hosted by the Western Governors' Association.

DIPLOMATIC REPRESENTATION

- The U.S. Consul General in Calgary is Ms. Laura Lochman.
- The Canadian Ambassador in Washington, D.C. is Gary Doer.
- The Canadian Consulate responsible for New Mexico is located in Los Angeles, California. David Fransen is the Consul General.

