



PROFILE

Capital: Boise

Population: 1,567,582 (2010)

Language: English

Government: Bicameral state government

Head of Government: Governor

C.L. (Butch) Otter (R)

Currency: U.S. Dollars

\$1 CDN = \$0.9830 U.S. (November 2011)

Gross State Product (GSP): U.S. \$54.8 billion (2010)

GSP Per Capita: U.S. \$34,258 (2010)

Unemployment: 9.0% (September 2011)

Key Industry Sectors: Agriculture, high technology, forestry, mining, and tourism.

Main Cities (Metro Areas): (2010)

- Boise / Nampa: 505, 671
- Idaho Falls: 122, 995
- Pocatello: 88, 495

DID YOU KNOW?

- Like Alberta, Idaho has a twinning relationship with Jalisco, Mexico.
- Major employers in the state include Hewlett Packard, Micron and Simplot (agriculture).

RELATIONSHIP OVERVIEW

- Alberta and Idaho signed a cooperation agreement in May 2000 to promote bilateral relations and advance mutual opportunities.
- The agreement was signed during a 40-member trade mission to Alberta led by former Governor to increase economic cooperation between the two jurisdictions.
- Former Governor Kempthorne was confirmed as US Secretary of the Interior in May 2006.

TRADE AND INVESTMENT

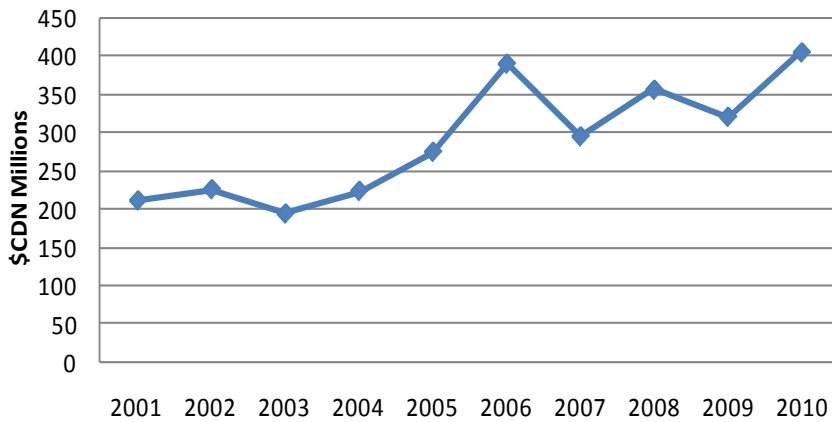
- Canada is Idaho's third largest export customer.
- Alberta exports to Idaho have averaged \$353.4 million annually over the past five years.
- In 2010, Alberta exports to Idaho were valued at \$405.2 million, primarily composed of oil, chemicals such as fertilizer and ammonia, natural gas, and wood products.

- Idaho imported 28.2 billion cubic feet of natural gas from Alberta in 2008.
- Real estate, retail trade and construction, all driven by the state's expanding population, also contributed to the growth.

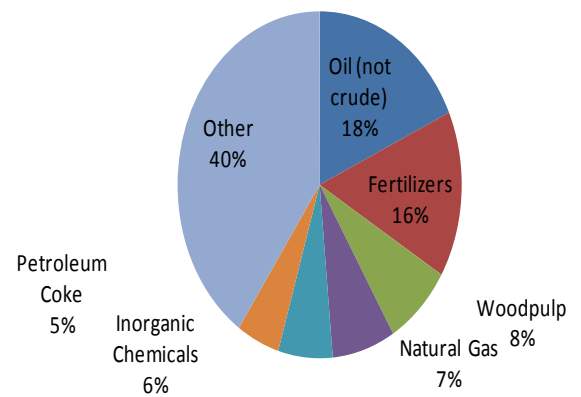
ENERGY

- The majority of Idaho's electricity generation is supplied by hydroelectric power.
- The Hells Canyon Complex (located on the Snake River in Idaho) is the largest privately-owned hydroelectric power development in the U.S.
- In March 2008, the Idaho National Laboratories signed a Memorandum of Understanding with Alberta Innovates, Technology Futures to collaborate on alternative energy research such as unconventional fuel in the U.S. and nuclear energy in Alberta.
- There are opportunities for Alberta's clean-technology and alternative-energy companies in Idaho. Of particular interest are the new technologies, processes and equipment that use plant waste rather than grain or corn to produce ethanol.

Alberta's Domestic Exports to Idaho (2001-2010)



Alberta's Domestic Exports to Idaho (2006-2010)



AGRICULTURE

- Alberta's 2009 agri-food exports to Idaho totaled \$81.7 million. Top exports included oilseed cake and meal (\$15.3 million), live cattle (\$13.5 million), beef (\$11 million), refined canola oil (\$7.8 million) and seeds for sowing (\$7.3 million).
- Alberta participates in a number of regional forums providing opportunities to engage with Idaho on common agricultural issues. Alberta and Oregon co-hosted the 2009 Cross Border Livestock Health Conference (CBLHC).

TECHNOLOGY

- Alberta works closely with Idaho's National Engineering and Environmental Laboratory (INEEL).
- INEEL officials visited Alberta in October, 2003, to participate in the Remediation Technologies (RemTech) Symposium.
- Alberta Economic Development, in cooperation with the Seattle Consulate, facilitated technology advancement and partnering mission to the Idaho National Laboratory in March 2005.

TRANSPORTATION

- Idaho provides an important transportation link for Alberta exports to other markets in the US and Mexico.
- Idaho is important to Alberta in working to advance CANAMEX, a north-south trade and transportation corridor.

EMERGING OPPORTUNITIES

- High technology ranks as one of the state's largest production industries.
- Agricultural products, forestry/wood products, and metals and mining machinery.

SHARED ORGANIZATIONS

- Alberta and Idaho signed a Memorandum of Understanding (MOU) on Cooperation in May 2000.
- Both Alberta and Idaho are members of sectoral organizations in the areas of agriculture (WASDA), forestry, and electrical energy (WIEB).
- Alberta and Idaho are members of several transboundary organizations such as Pacific NorthWest Economic Region, Western Governor's Association, and Council of State Governments - West.
- Western Association of State Departments of Agriculture (WASDA).

RECENT VISITS

- September 2010: IIR Minister Evans represented Alberta at the CSG-WEST annual meeting in Sun Valley.
- January 2010: MLA Fawcett represented Alberta at the PNWER legislator visit to Boise.
- July 2009: Environment Minister Renner, Energy Minister Knight and 8 Alberta MLA's participated in the PNWER Summer Summit in Boise.
- April 2009: MLA Delong represented Alberta in the Canada Day's event in Boise.
- January 2009: MLA Mitzel represented Alberta at the PNWER legislator visit to Boise.
- December 2008: IIR Minister Stevens participated in a tour of the Idaho National Labs (INL) facility in Idaho Falls.
- August 2008: Agriculture Minister Groeneveld attended the 18th annual meeting of the Tri-National Agricultural Accord in Coeur d'Alene, Idaho.
- July 2006: Idaho Commerce Director Roger Madsen traveled to Edmonton and met with the Ministers of IIR and AED to discuss Alberta-Idaho relations.

DIPLOMATIC REPRESENTATION

- The US Consul General in Calgary is Laura Lochman.
- The Canadian Consulate responsible for Idaho is located in Seattle, Washington. Denis Stevens is the Consul General.

